

# Additional Service Manual

## SERVICE INFORMATION (PARTS)

### AlphaTheta

Date: Apr. 12, 2023

No.: SPH20005-B

The explanation for Note: \*1 -\*3 is described on the last page of this SI.

Model No.	Group*1	Applied counter-measure to MP*2	Serial number applied countermeasure *3
XDJ-1000MK2/LSYXJ	A	Yes	819007EH~
XDJ-1000MK2/UXJCB	A	Yes	806831CC~
XDJ-1000MK2/AXJ	A	Yes	800471CN~

#### Detail

<b>DETAIL</b>	- Change due to substitution LCD
<b>REASON</b>	- Due to procurement convenience

**Please discard the previous SI (SPH20005-A, Date : Aug.23, 2021)**

**[Change] Further design change of Main ASSY ( DWX4413->DWX4629) and service kit (GXX1471 -> GXX2009) due to procurement convenience of components**

\* Main ASSY (DWX4413 and DWX4629) are interchangeable. Also, GXX2009 can be used as alternative of GXX1471. But please note that GXX1471 cannot be used as alternative of GXX2009 since it does not have Main ASSY (DWX4413).

LCD will be changed to alternative one since the current LCD will not be available due to manufacturer's convenience. In case of replace LCD from old one to new one, modification below is required.

The current stock of the old LCD is very valuable, so please use the new LCD from now on except for the case that must use old LCD.

[Changes] Please perform the remedy below at the same time when changing LCD from old to new.

1. Change packing/S (No.16 P.29 of SM(RRV4660) )

\* Packing /L (No.15 P.29 of SM(RRV4660) can be moved from original LCD.)

2. Change LCDB ASSY (DWX3921 -> DWX4387)

3. Change Main ASSY (DWX3920 -> DWX4413 -> **DWX4629**)

Service kit (**GXX2009**) as follows is arranged for this remedy.

[Components of service kit (**GXX2009**)]

1. LCD DWX4375 1 pcs

2. Packing/S DEC3886 2 pcs

3. LCDB ASSY DWX4387 1pcs

4. Main ASSY **DWX4629** 1pcs

**MP unit that has new LCD has serial No that starts with "8" as distinction. And you can distinguish from internal also.** Please refer to the next page.

LCDB ASSY is for exclusive use. In case of combination with new LCD and old LCDB ASSY & MAIN ASSY (or its reverse), LCD does not work properly (Ex. Indication shifts, etc.) So, please combine old LCD and old LCDB & MAIN ASSY or new LCD and new LCDB & MAINASSY.

Also, color tendency of new LCD is slightly different from old LCD. (Old : white is bluish New : white is yellowish.) Please explain this is within specification although customer might point out when placing the units with old and new LCD.

**Please put a blue dot at the serial No label after changing from old to new LCD.**

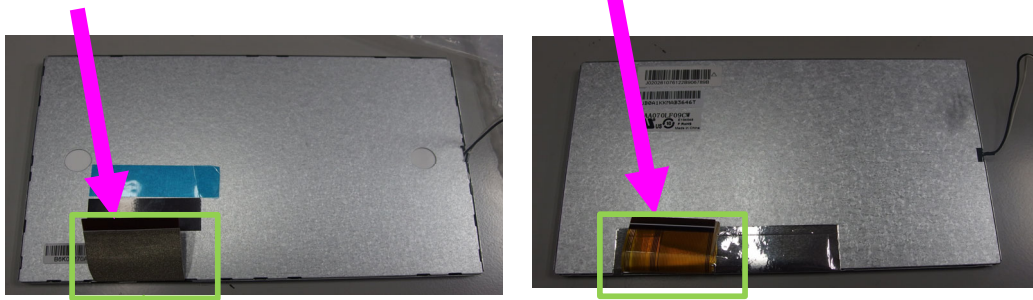
Group *1	Current Part		Parts compatibility	New Part	
	Part Name(Symbol)	Part Number		Part Number	Part Name(Symbol)
A	LCD	CWX4352	4	DWX4375	LCD
A	Packing /S	DEC3569	2	DEC3886	Packing /S
A	LCDB ASSY	DWX3921	2	DWX4387	LCDB ASSY
A	<b>MAIN ASSY</b>	<b>DWX3920</b>	2	<b>DWX4629</b>	<b>MAIN ASSY</b>
A	<b>LCD Service kit</b>	<b>GXX1471</b>	1	<b>GXX2009</b>	<b>LCD Service kit</b>

[Part compatibility] 1:Changeable from old to new. 2:Not Interchangeable at all. 3:Interchangeable in both ways.  
4:only in special case 5:Do not use old parts. Memo:

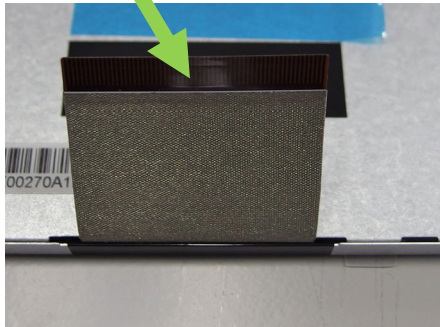
QA19-N010-A

Services examination(E): E1 Web release(W): W1 YS

[Distinguish between old and new LCD]



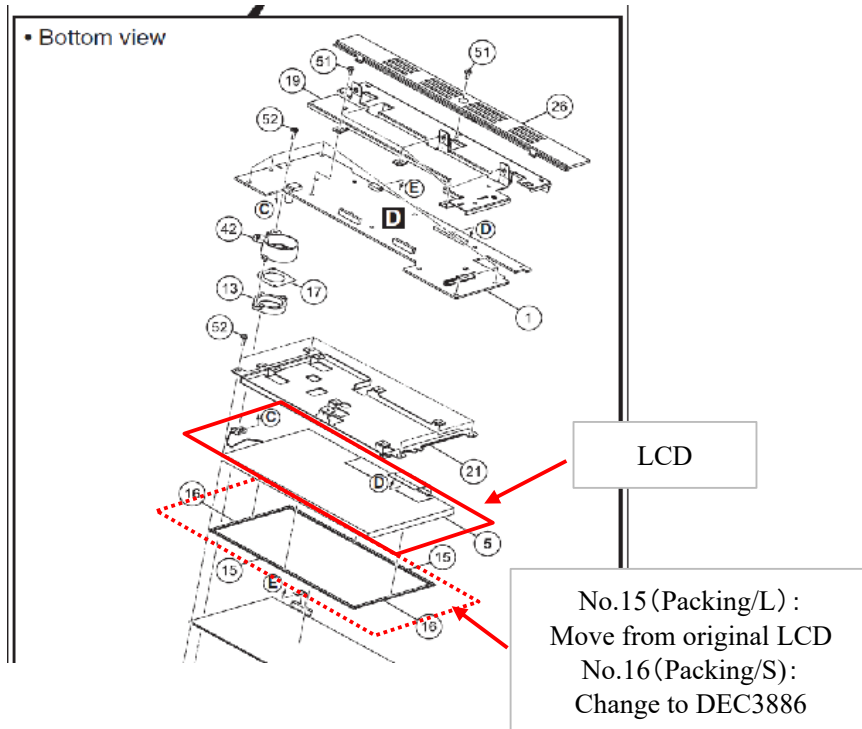
Old LCD : There is no silver sheet on FFC



New LCD : There is silver sheet on FFC

[Packing for LCD]

Regarding packings around LCD, please move packing/L from original LCD and change packing/S to new one that is packed in service kit.

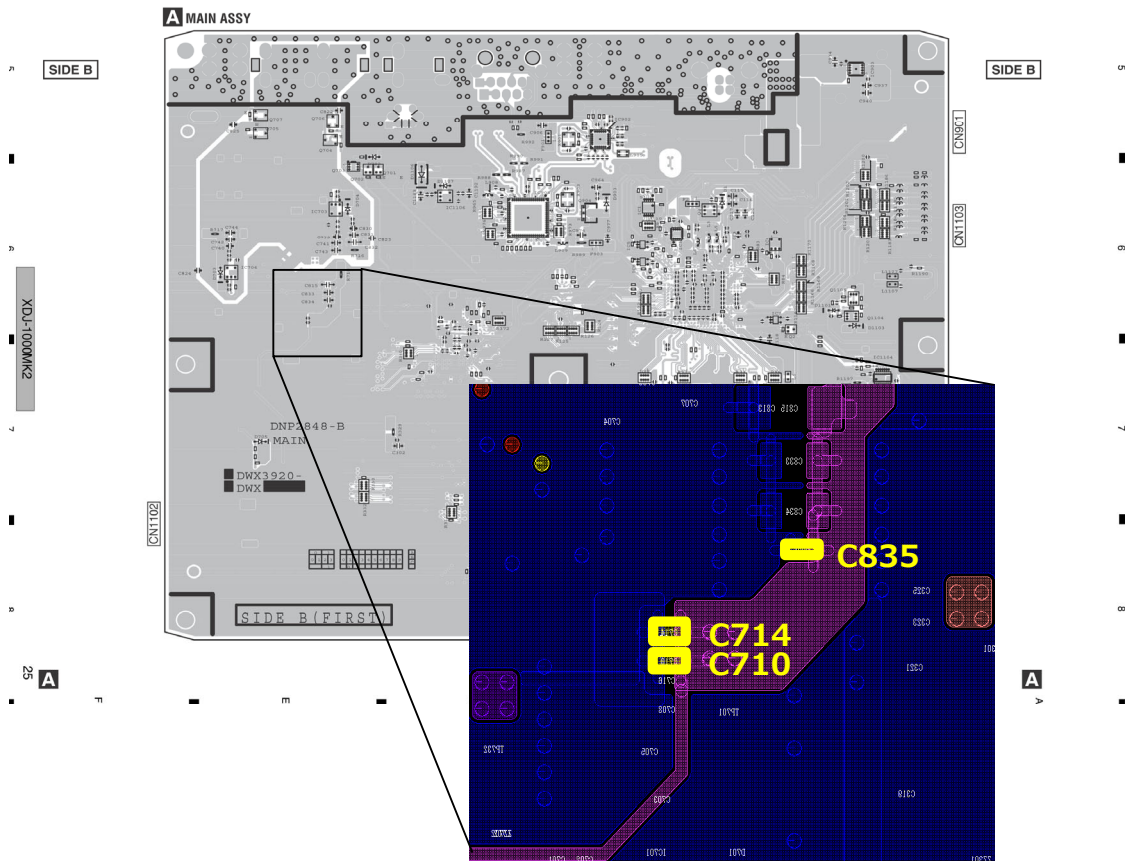
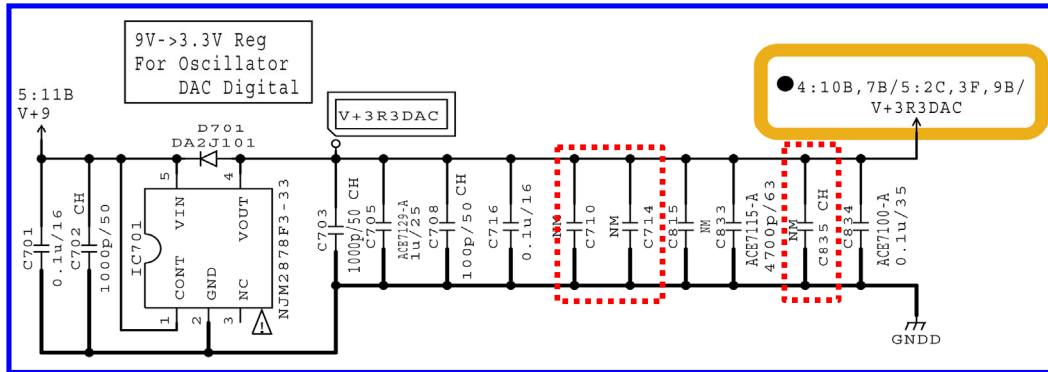


[Exploded view of SM (P.29)]

[FYI] Location of additional capacitors

SM(RRV4661) P.9 B2~B3

\* The only difference between old (DWX3920) & new MAIN ASSY(DWX4413) is the capacitor below



**Supplementary Explanation** (This contents are not related to the service remedy of this SL.)**\*1 Group**

Even if the countermeasure method is the same, replacement part or firmware, for instance, may differ depending on models.

This symbol (alphabet) is used for classifying models in such case.

If the group is same, exactly the same remedy can be applied.

**\*2 Applied countermeasure to Mass Production (MP)**

Indicate whether the countermeasure has been/will be taken during production or not

(1) Yes The countermeasure has been/will be taken during production.

(2) No The countermeasure has NOT been/will NOT be taken during production.

**\*3 Serial number applied countermeasure**

Indicate the serial number, in case the countermeasure has already been/will be applied in the production at factory.

(1) "Serial Number" This is the serial number to which the countermeasure has already been/will be applied.

Sample 1: "ABCD001000UC-"

The countermeasure has started/will start from ABCD001000UC at factory.

Sample 2: "RD\*\*-"

In case of unknown the actual number, only production year/month is shown here.

(RD : April, 2018)

(2) "-----" Not applied the countermeasure in the production.  
Or, unknown the applied serial number.